

SG-8060P Mark II
Digital Drum Scanner

Input



Innovation & Reliability

True Professional Quality and Speed

DAINIPPON SCREEN'S SG-8060P MARK II IS AN ADVANCED DRUM SCANNER THAT OFFERS THE HIGHEST LEVELS OF SCANNING PERFORMANCE. PREPRESS PROFESSIONALS CAN RELY ON THE SG-8060 MARK II TO PROVIDE SUPERIOR QUALITY AND SPEED DAY AFTER DAY. ITS INDUSTRY-LEADING PRECISION SCANNING HEAD AFFORDS RESOLUTIONS UP TO 12,000 DPI, AS WELL AS 10% TO 3,000% MAGNIFICATIONS. IT IS ALSO EQUIPPED WITH MANY INTELLIGENT AUTOMATION FEATURES TO SAVE TIME AND INCREASE PRODUCTIVITY.



Superior quality

Outstanding versatility and reliability

State of the art optical system

The SG-8060P Mark II is equipped with an advanced scanning head that provides superior image quality whether you are scanning transparencies or reflective materials. Its xenon lamp, being brighter than standard halogen lamps, helps to minimize image noise and capture subtle shadings even in shadow areas. And thanks to the highly effective light distribution provided by its multi-directional illumination system, the SG-8060 Mark II consistently provides extremely accurate scans.

High resolution and wide magnification range

The SG-8060P Mark II can output in resolutions up to 12,000 dpi. It also offers an exceptionally wide magnification range—between 10% and 3,000% in 0.1% increments. With this kind of resolution and magnification range, the SG-8060 Mark II provides the versatility for a very wide variety of purposes.

Unsharp masking for superior results

The SG-8060P Mark II employs digital unsharp masking. Unsharp masking provides sharper details for high-contrast areas without causing tonal shifts in other areas. It enables fine details and areas of contrast to be emphasized while maintaining smooth gradations and tone in other areas. This improves the overall appearance and quality of the image.

AI setups

AI setups are enabled by an intelligent, auto-learning design. The SG-8060 Mark II can automatically prescan originals and set highlight and shadow points. This provides greatly superior tonal balance, especially for high-key and low-key originals. There are special AI setups available for negative films and other parameters. You can also customize individual AI setups according to job types. AI setups make scanning effortless. They help both novices and experts to consistently achieve high-quality results.

ICC and colorsync-enabled soft proofing

The SG-8060P Mark II supports ColorSync and ICC standards. This enables you to achieve more accurate color matches between computer displays and the final output. The system comes with software tools that make setting up ICC profiles easy. By matching display and output profiles to ICC profiles, you can make the most of all the advantages and savings of accurate soft proofing.

Easy operation

All you need for the highest quality scanning

Batch scanning made fast and easy

Scanning setups are made easy using either AI or manual setups for mounted originals. Fast prescanning combined with automated focus, aperture, and lighting achieves high-quality batch scanning for up to 100 originals. Setups can also be saved to make later scan sessions faster.

High-speed 16-bit output for large-size originals

The SG-8060P Mark II can scan images in 24- or 48-bit RGB, as well as 32-bit CMYK. Just choose the level of quality you need. Originals up to 600 x 538 mm (23.6" x 21.2") in size can be scanned with both high speed and high quality.

Flexible output formats for a variety of uses

The SG-8060P Mark II can output in a variety of formats to suit different needs. TIFF, EPS, Scitex CT, and PICT formats are available for RGB output with 8 or 16 bits per color. For CMYK, 8-bit-per-color TIFF, EPS, and Scitex CT formats are available. Grayscale 8-bit output is also possible in these formats and JPEG. Different originals on the same drum can be output in different formats during batch scanning operations. A simple click of the mouse allows the operator to select the desired format for each image.

Supports ICR

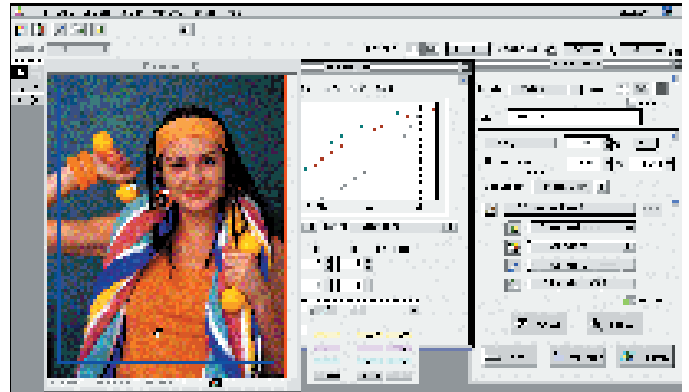
The SG-8060P Mark II features integrated color removal (ICR). ICR is Screen's own advanced implementation of gray component replacement (GCR). It allows you to reduce the total amount of ink required when the job is printed. All you have to do is select an ICR level, and the image's CMY gray component is automatically replaced with black. This also helps to reduce on-press color shifts and saves money.

Automation you can trust

The SG-8060P Mark II features advanced automation that makes high-quality scanning a snap. The aperture is digitally controlled, to give you the finest focus possible for every situation. Automatic aperture setting for each magnification enables programmed batch scanning of originals with different resolution requirements. Auto-focus eliminates the need to focus manually. Automated light source selection lets you use batch scanning even when transparencies and reflective originals are mounted on the same drum. An enlargement/reduction ratio can be calculated by specifying the finished size between the two points on the preview image. All this adds up to a lot of saved time for your operators, and increased throughput overall.

Setup made easy with a preset library

The SG-8060P Mark II allows you to save commonly used settings as presets, in a special preset library. These presets can include any of the settings normally used for setup, and can save the operator a great deal of time. If the original is slightly different from the standard, the operator can tweak the settings to compensate. The size of the library is virtually unlimited.



Prescanning made simple

Prescanning with the SG-8060P Mark II greatly reduces overall set up time and simplifies operation with its additional automated functions. These include a trimming function, which automatically detects the original's position by analyzing prescanned image densities, and an automated scan resolution setting function, which determines optimized scanning resolutions according to the size of the area specified for previewing. Just select an AI setup and the section of the drum you want to use for prescanning. You can also set up the originals manually with the SG-8060 Mark II's advanced but easy-to-use interface.

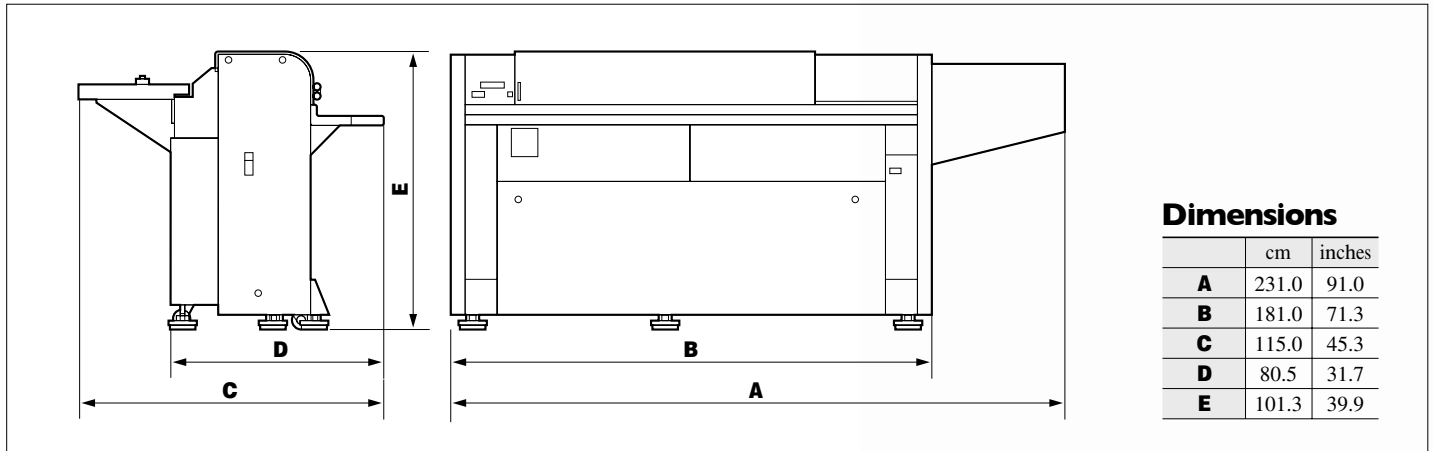
deMoiré Moiré reduction option

deMoiré is an optional moiré cut filter that detects and corrects moiré patterns, freeing operators from the difficult task of doing so manually. deMoiré can catch moiré patterns before they get a chance to cause trouble and delays later during platemaking or printing. Preventing moiré problems early saves time and increases productivity. What's more, deMoiré is easy to use and does not require a high level of skill.

Monotone function

Ordinarily, only the black separation is used to create monochrome images. The SG-8060P Mark II, however, outputs all four CMYK separations to render gray tones, thus enabling the creation of monochrome images with far greater contrast.

Space requirements



SG-8060P Mark II specifications

Model	SG-8060P Mark II
Light sensor	Xenon lamp, 75W
Original types	Transparencies, reflective originals, negatives
Max. original size	A type: 600 x 538 mm (23.6" x 21.2") (circumference) B type: 287 x 255 mm (10.9" x 10.0") (circumference) AL type: 645 x 538 mm (25.4" x 21.2") (circumference)
Drum type	A type: ϕ 180 x 600 mm (standard) B type: ϕ 90 x 287 mm (optional) AL type: ϕ 180 x 645 mm (optional)
Focus	Preset or auto
Aperture	Variable unstepped auto-aperture
Drum rotation	Max. 1,200 rpm
Magnification	10% to 3,000% in 0.1% increments
Output resolution	40 to 12,000 dpi
Max. density	4.3D (typical value)
Batch scanning	Max. 100 originals (varies with system used)
Output color depth	RGB: 8 or 16 bits per color CMYK: 8 bits per color Grayscale: 8 bits per pixel
Calorific value	1,700 kJ (410 kcal)/ 1,600 BTU
Output file formats	RGB: TIFF, EPS, PICT, Scitex CT CMYK: TIFF, EPS, Scitex CT Grayscale: TIFF, EPS, PICT, Scitex CT
Interface	SCSI 2
Recommended host	Power Macintosh (Contact your Screen representative for details)
Power requirements	Single phase 200 to 230V, 0.48 kW 2.5A
Weight	Approx. 480 kg (1,056 lb.)
Environment	23 \pm 2°C (73.4 \pm 4°F), 50% to 70% RH

Standard accessories

- A-type scanner cylinder
- Cylinder case
- Driver software disks
- SCSI cable
- SCSI terminator
- Extension serial cable

Optional accessories

- AL-type scanner cylinder (transparent)
- AL-type scanner cylinder (semitransparent)
- B-type scanner cylinder
- Mounting device for originals
- Monitor table
- Rear table
- Monochrome function
- deMoiré

DAINIPPON SCREEN MFG CO., LTD.

HEAD OFFICE
 • Tarānouchi-agari, 4-chome, Horikawa-dori, Kamigyo-ku, Kyoto, 602-8585 Japan/Phone +81-75-414-7610/Fax +81-75-414-7608

SCREEN (USA)
 • 5110 Tollview Dr., Rolling Meadows, IL 60008, USA/Phone 847-870-7400/Fax 847-870-0149 www.screenusa.com

DAINIPPON SCREEN (DEUTSCHLAND) GmbH
 • Mündelheimer Weg 39, 40472 Düsseldorf, Germany/Phone 0211-472701/Fax 0211-4727199/Telex 858-4438 DSDD D

DAINIPPON SCREEN (U.K.) LTD.
 • Michigan Drive, Tongwell, Milton Keynes, Buckinghamshire MK15 8HT, UK/Phone 01908-848500/Fax 01908-848501 www.screen.co.uk

DAINIPPON SCREEN (NETHERLAND) BV
 • Bouwerij 46, 1185XX Amstelveen, Holland/Phone 020-4567800/Fax 020-4567805 www.screeneuropa.com

SCREEN FRANCE
 • Z.I. Paris Nord II, 12 Rue des Chardonnerets, B.P. 50315, F-95940 ROISSY C.D.G. Cedex, France/Phone 1-48-17-86-00/Fax 1-48-17-86-01

DAINIPPON SCREEN SINGAPORE PTE. LTD.
 • 29, Kaki Bukit View, Kaki Bukit Techpark II, Singapore 415963/Phone 67493833/Fax 67499010 www.screensp.com.sg

DAINIPPON SCREEN (CHINA) LTD.
 • 8th Floor, 414 Kwun Tong Road, Kwun Tong, Kowloon, Hong Kong/Phone 2953-0038/Fax 2755-8683

Beijing office /Phone 010-5708-9271, 9272, 9273/Fax 010-6505-4975 (China)
Shanghai office /Phone 021-6466-4501/Fax 021-6466-4503 (China)
Guangzhou office /Phone 020-3891-1112/Fax 020-3891-1036 (China)

DAINIPPON SCREEN (TAIWAN) CO., LTD.
 • 4F No. 126-1, Ming Tsu West Rd., Taipei, Taiwan/Phone 02-25862711/Fax 02-25914367

DAINIPPON SCREEN (KOREA) CO., LTD.
 • 8th Yonsei Bongsae B/D 48-3, 1Ga, Bongsae-Dong, Joong-Gu, Seoul 100-161, Korea/Phone 02-7766-7866/Fax 02-7766-787

DAINIPPON SCREEN (AUSTRALIA) PTY. LTD.
 • Unit 2, 207-209 Young Street, Waterloo, NSW 2017, Australia/Phone 02-9310-1314/Fax 02-9310-3566

Internet web site www.screen.co.jp

- This brochure was made using SPEKTA screening.
- Printed on recycled paper.

We reserve the right to alter product design and specifications without prior notice.